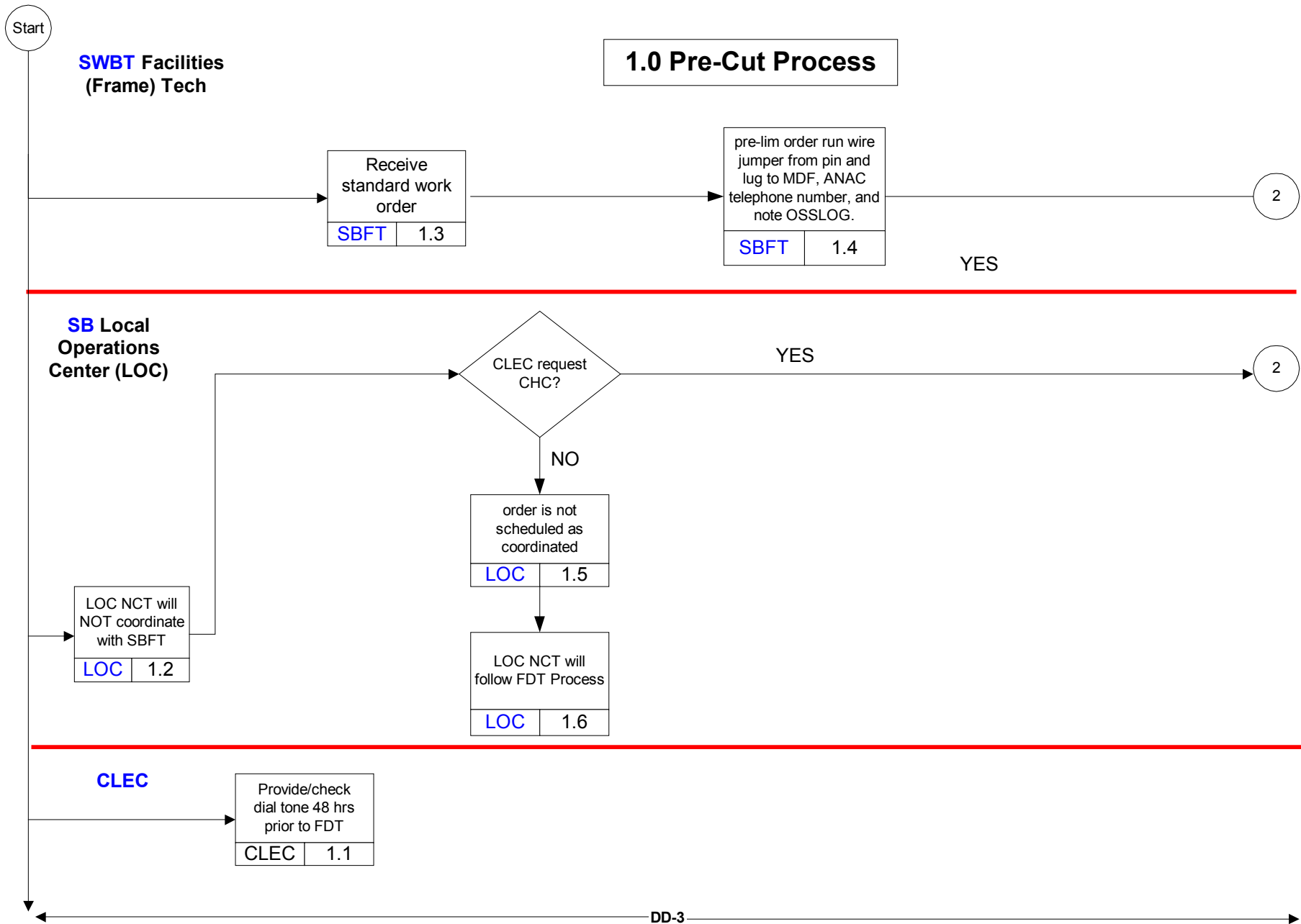


# Southwestern Bell Telephone (SWBT)/CLEC COORDINATED HOT CUT (CHC) Process

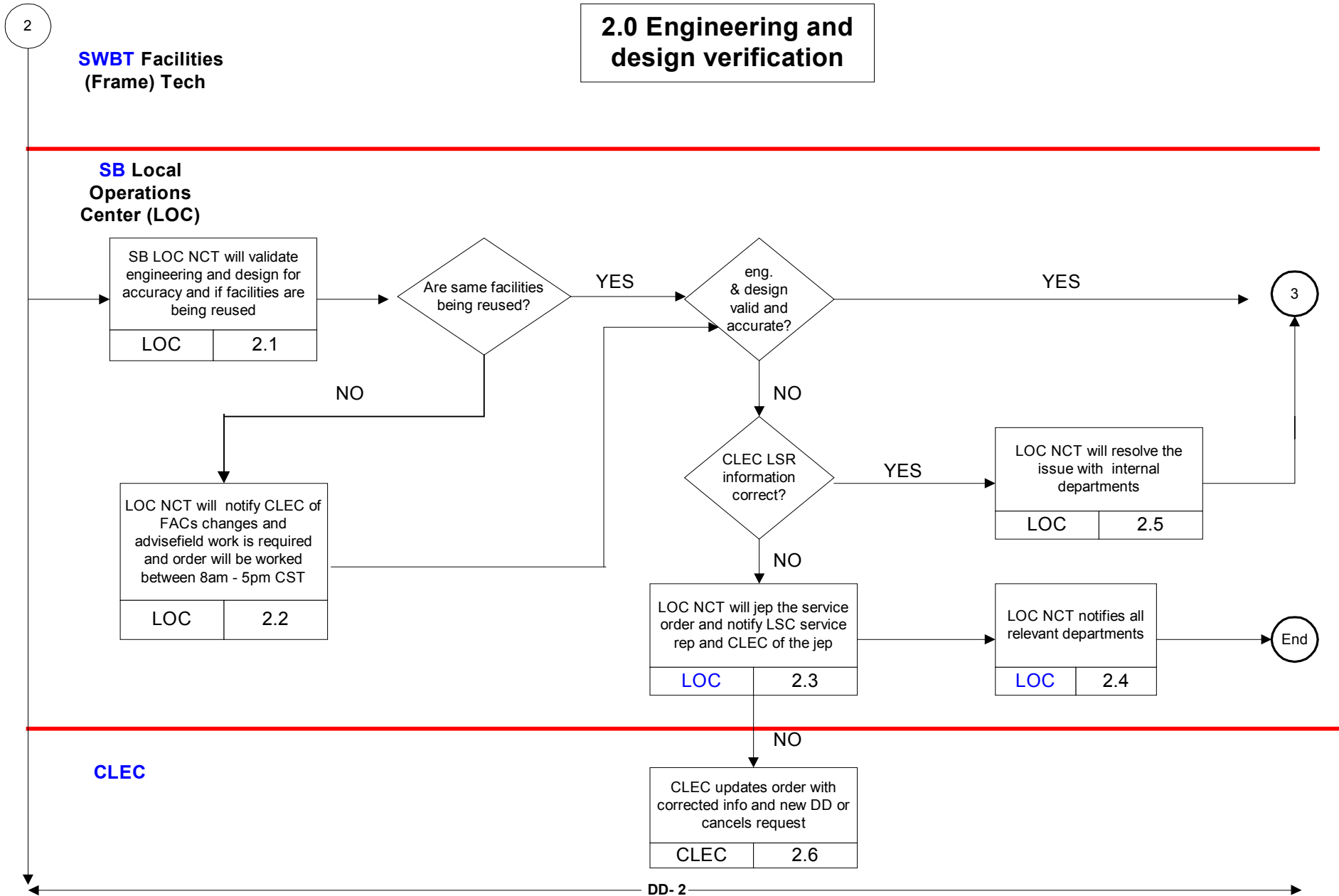
Version 3- Drafted: 10/4/2000



This process flow is a guideline for CLECs who coordinate LNP conversions with SWBT. It is a working Document subject to change without written notice.

# Southwestern Bell Telephone (SWBT)/CLEC COORDINATED HOT CUT (CHC) Process

Version 3- Drafted: 10/4/2000

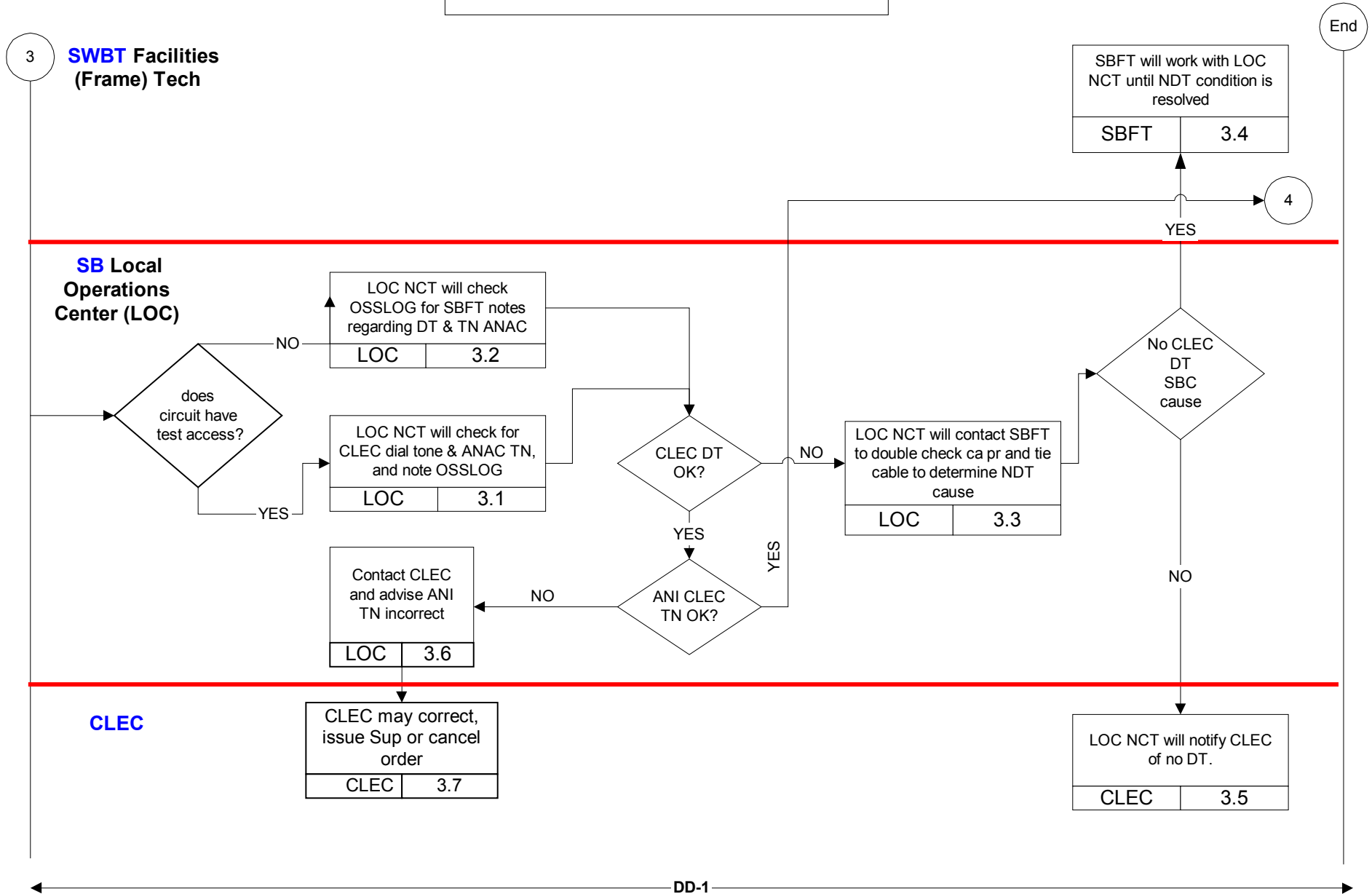


This process flow is a guideline for CLECs who coordinate LNP conversions with SWBT. It is a working Document subject to change without written notice.

# Southwestern Bell Telephone (SWBT)/CLEC COORDINATED HOT CUT (CHC) Process

Version 3- Drafted: 10/4/2000

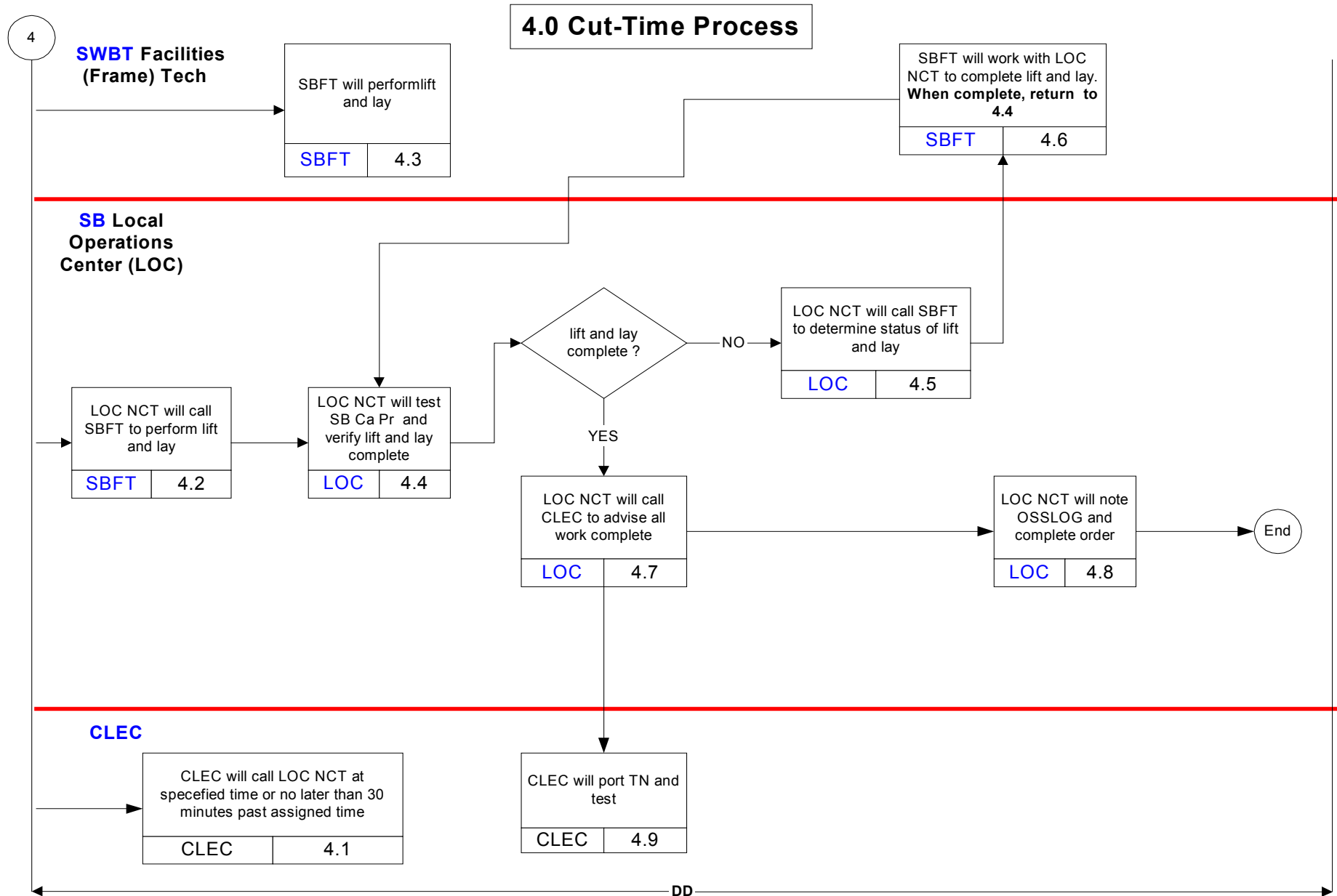
## 3.0 DT and ANI check



This process flow is a guideline for CLECs who coordinate LNP conversions with SWBT. It is a working Document subject to change without written notice.

# Southwestern Bell Telephone (SWBT)/CLEC COORDINATED HOT CUT (CHC) Process

*Version 3- Drafted: 10/4/2000*



This process flow is a guideline for CLECs who coordinate LNP conversions with SWBT. It is a working Document subject to change without written notice.

# Southwestern Bell Telephone (SWBT)/CLEC COORDINATED HOT CUT (CHC) Process

*Version 3- Drafted: 10/4/2000*

## **1.0 Pre-Cut Process**

- 1.1 CLEC will establish their dial tone 2 days prior to the scheduled cut date.
- 1.2 LOC Network Center Technician (NCT) will not coordinate with frame
- 1.3 SB Facilities Tech (SBFT) will receive standard work order.
- 1.4 SBFT will prelim the order, and run wire jumper from pin & lug to Main Distribution Frame (MDF). If dial tone is present, SBFT will ANAC TN and note osslog.

***A decision diamond is inserted here as to whether or not CLEC requested CHC. If CHC was not requested, continue on to 1.5. If not, continue on to 2.1.***

- 1.5 Order does not meet CHC criteria.
- 1.6 LOC NCT will follow the FDT process.

# Southwestern Bell Telephone (SWBT)/CLEC COORDINATED HOT CUT (CHC) Process

Version 3- Drafted: 10/4/2000

## 2.0 Engineering and Design Verification

2.1 LOC NCT will verify orders and validate reuse engineering and design for accuracy.

***A decision diamond is inserted here as to whether or not the same facilities are being reused. If same facilities are available, continue to next decision diamond. If not, continue to 2.2.***

2.2 LOC NCT will notify CLEC of FACs changes and advise that field work is required and order will be worked between 8am – 5pm CST. After notification to the CLEC, LOC technician will verify engineering and design as valid and accurate.

***A decision diamond is inserted here as to whether or not the engineering and design is valid and accurate. If order is valid and accurate continue to 3.0. If not, continue to next decision diamond.***

***A decision diamond is inserted here as to whether or not the information provided on the CLEC LSR is correct. If information is correct continue to 2.5. If not, continue to 2.3.***

2.3 LOC NCT will jep the service order and notify LSC service rep and CLEC of the jep.

2.4 LOC NCT notifies all relevant departments.

2.5 LOC NCT will call the LSC and request the information on the order corrected. LSC will re-issue order with correct information. LOC NCT will make every attempt to meet the migration window requested by the CLEC.

2.6 CLEC updates order with corrected information and new DD or cancel the request.

## Southwestern Bell Telephone (SWBT)/CLEC COORDINATED HOT CUT (CHC) Process

*Version 3- Drafted: 10/4/2000*

### **3.0 DT and ANI check**

***A decision diamond is inserted here as to whether or not the circuit has test access.***

- 3.1 If circuit has test access, SB LOC NCT will check the CLEC Dial Tone (DT) and ANAC the number using the Automatic Number Identification (ANI) using 1-800-346-0152 and document response in OSSLOG.
- 3.2 If circuit does not have test access, SB LOC NCT will check SBFT log notes for CLEC dial tone and ANAC information.
- 3.3 SB LOC NCT will contact SBFT to double check cable pair (Ca Pr) and tie cable to determine root cause.

***A decision diamond is inserted here as to whether or not CLEC DT is OK. If CLEC DT is OK, continue to the next decision diamond. If CLEC DT is not OK go to 3.4***

***A decision diamond is inserted here as to whether or not CLEC TN ANI is correct. If CLEC TN/ANI is correct continue to 4.0 if not correct continue to 3.6.***

- 3.4 LOC NCT will work with SBFT to correct SB no dial tone condition; LOC NCT will escalate as necessary to resolve no dial tone condition.

***A decision diamond is inserted here as to whether or not no DT is SB cause. If the no DT condition is SB cause, continue on to 3.7.***

- 3.5 LOC NCT will notify CLEC of no dial tone.
- 3.6 The SB LOC NCT will notify CLEC that ANAC ANI Number is incorrect.
- 3.7 CLEC will issue SUP or CANCEL Order.

## Southwestern Bell Telephone (SWBT)/CLEC COORDINATED HOT CUT (CHC) Process

Version 3- Drafted: 10/4/2000

### 4.0 Cut time Process

- 4.1 CLEC will call LOC at specified time or no later than 30 minutes past the scheduled time.
- 4.2 LOC NCT will call the SBFT at the CO to work the order.
- 4.3 SBFT will perform lift and lay and advise LOC NCT.
- 4.4 LOC NCT will test SB Ca Pr to verify lift and lay complete.

***A decision diamond is inserted here as to whether or not lift and lay has been completed by SBFT. If lift and lay has been completed by SBFT, then continue to 4.7.***

- 4.5 LOC NCT will call SBFT to determine status of lift and lay.
- 4.6 SBFT will work with LOC NCT to complete lift and lay. When complete, return to 4.4
- 4.7 SB LOC NCT will call CLEC to advise all work complete.
- 4.8 LOC NCT will note OSSLOG and complete order.
- 4.9 CLEC will port TN and test.

NOTE: If CLEC does not call LOC NCT at specified time or no less than 30 minutes past the scheduled time, the service order will be jep'd to CLEC not ready. A new DD and new time must be requested with the Local Service Center (LSC).